

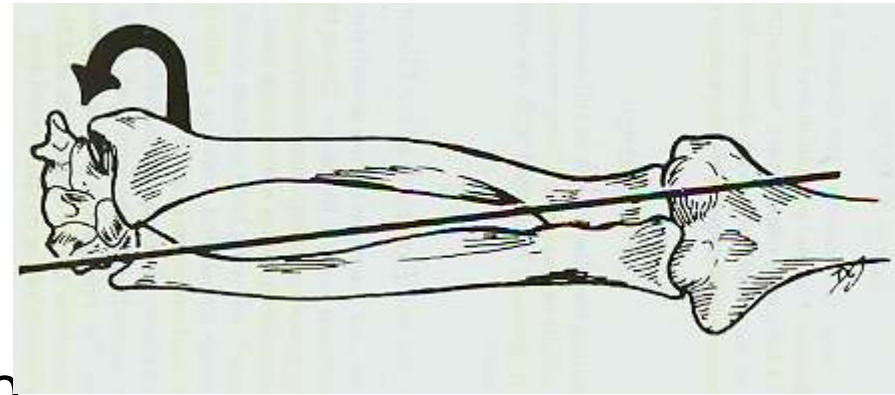
# Ulnar sided Wrist pain Anatomy

Jeff Auyeung



# PRUJ/Forearm/DRUJ

- Radioulnar Joint
  - main site of pronation & supination
- ROM
  - pronation 85-90°
  - supination 90°
  - Functional ROM
    - pronation & supination 50°
  - P/S ROM dependent on elbow flexion/extension



- Articulations

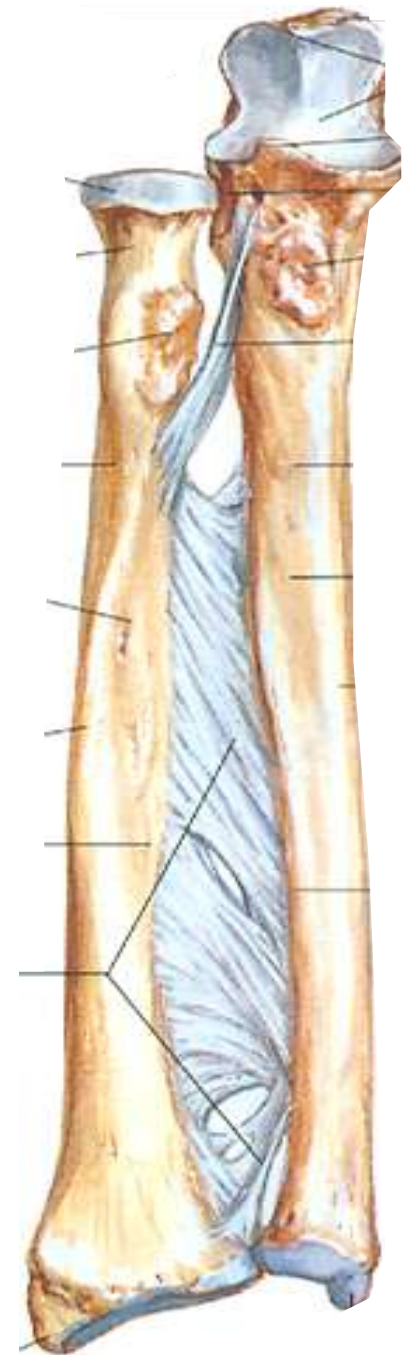
- PRUJ & DRUJ

- Oblique Cord

- ulnar tuberosity to distal of radial tuberosity

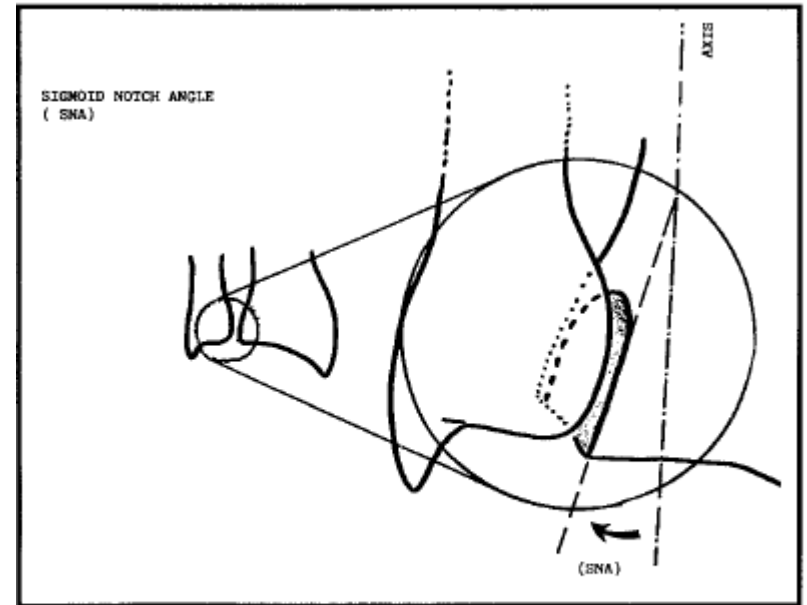
- Interosseous Membrane

- broad sheet, sharp borders of radius & ulna
- fibers oriented to resist independent upward movement of radius
- taut in neutral, lax in pronation/supination

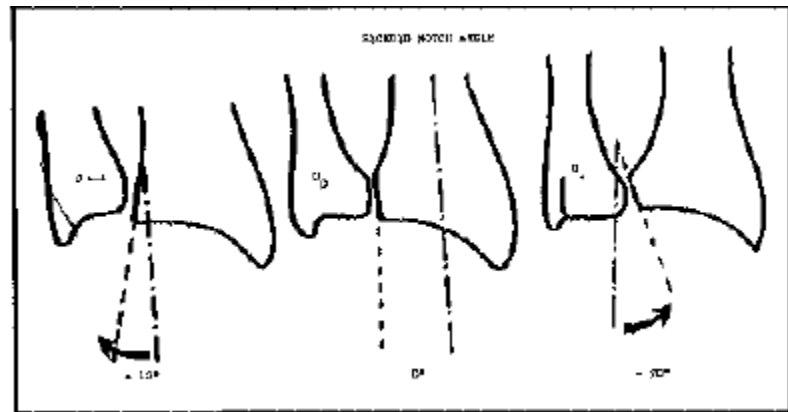


# Sigmoid notch

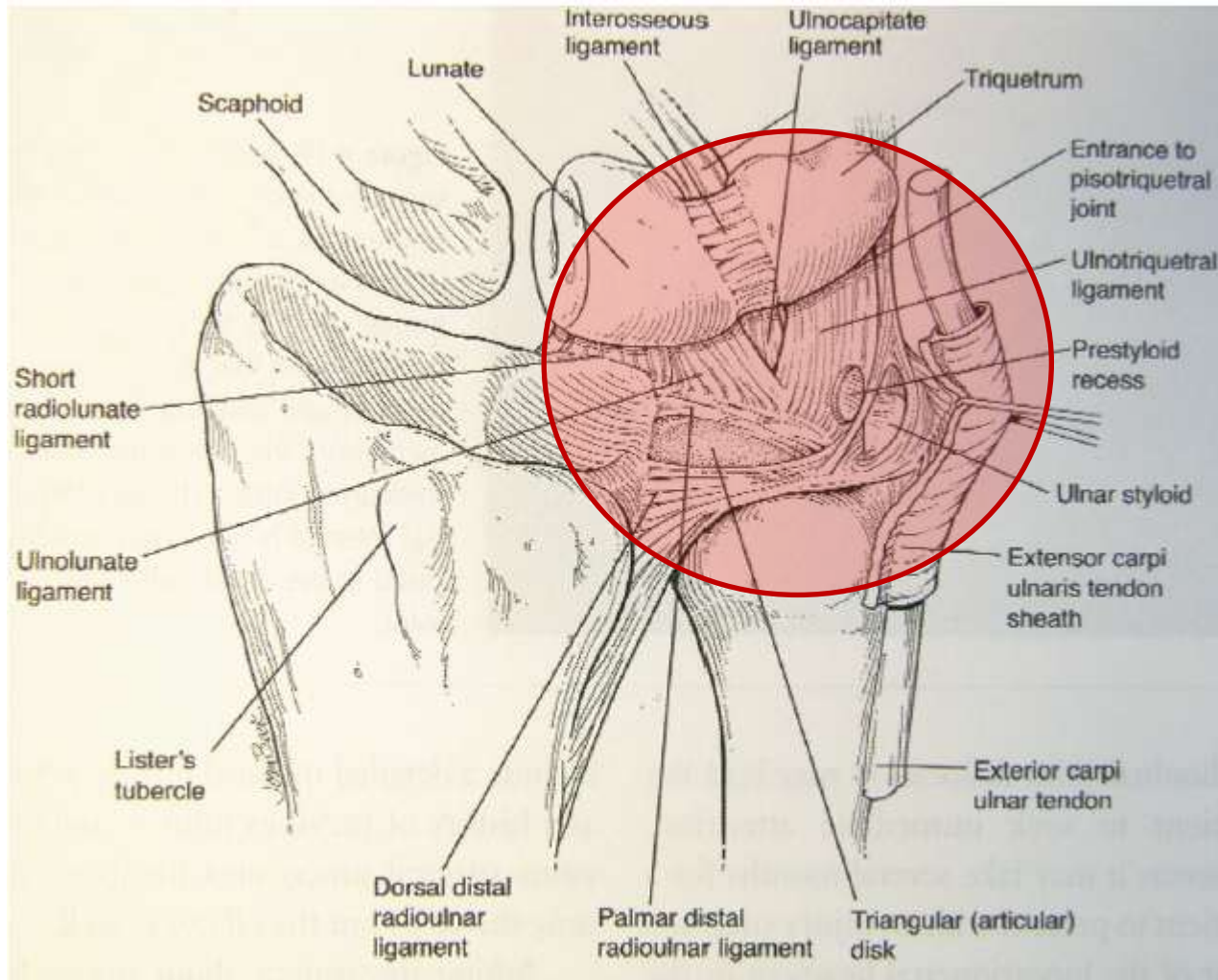
- Ulnar minus – positive SNA and conical head
  - Type I
- Neutral – neutral SNA and cylindrical head
  - Type II
- Ulnar plus – negative SNA and hemispherical ulnar head
  - Type III



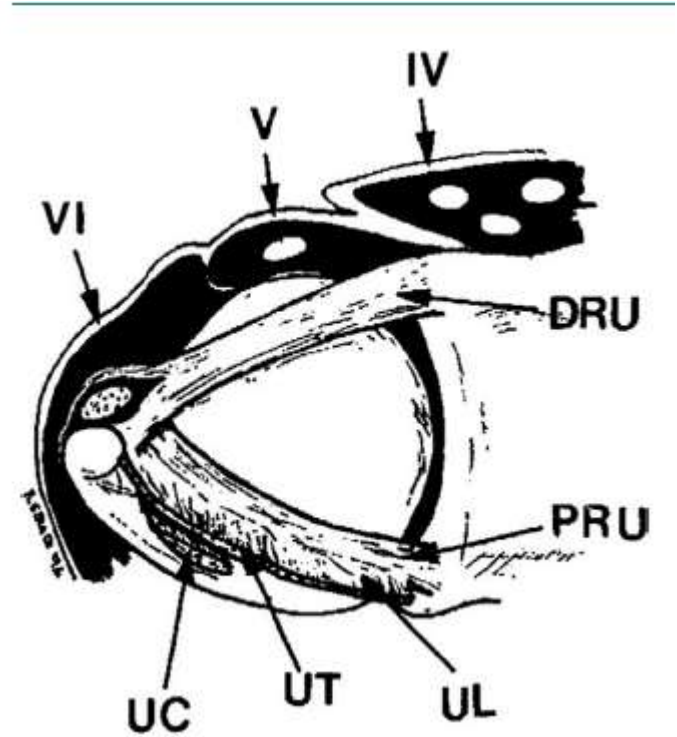
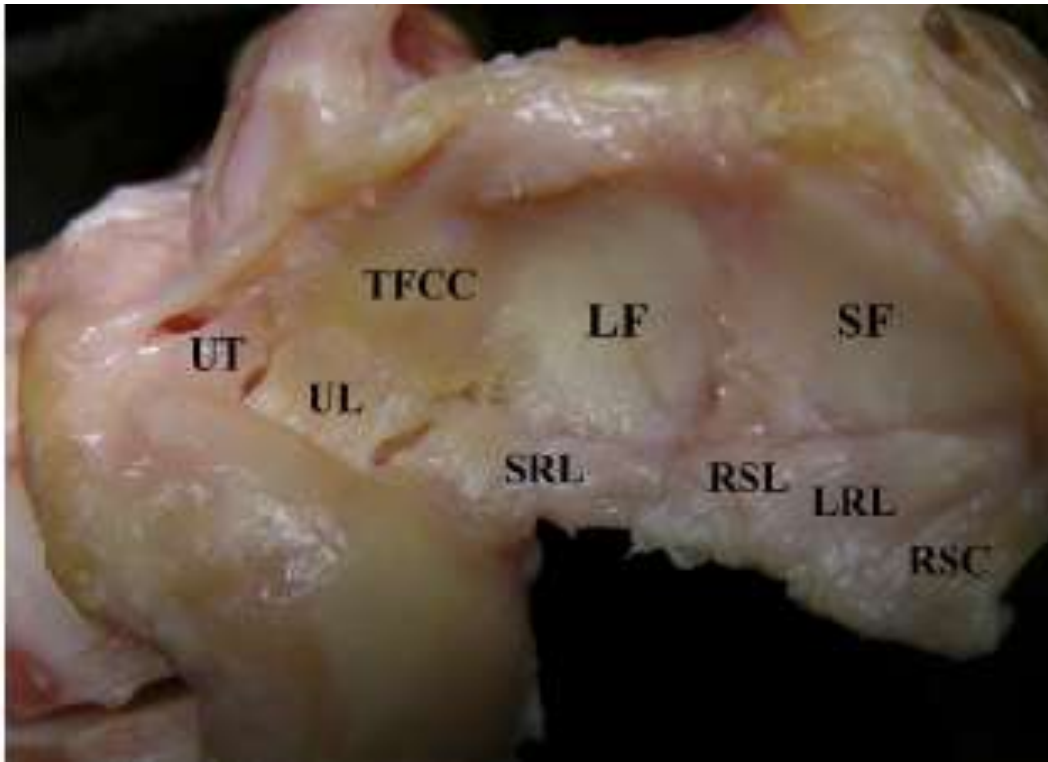
*Fig. 1.* — “Classical” morphology of the distal radioulnar joint (SNA = sigmoid notch angle).



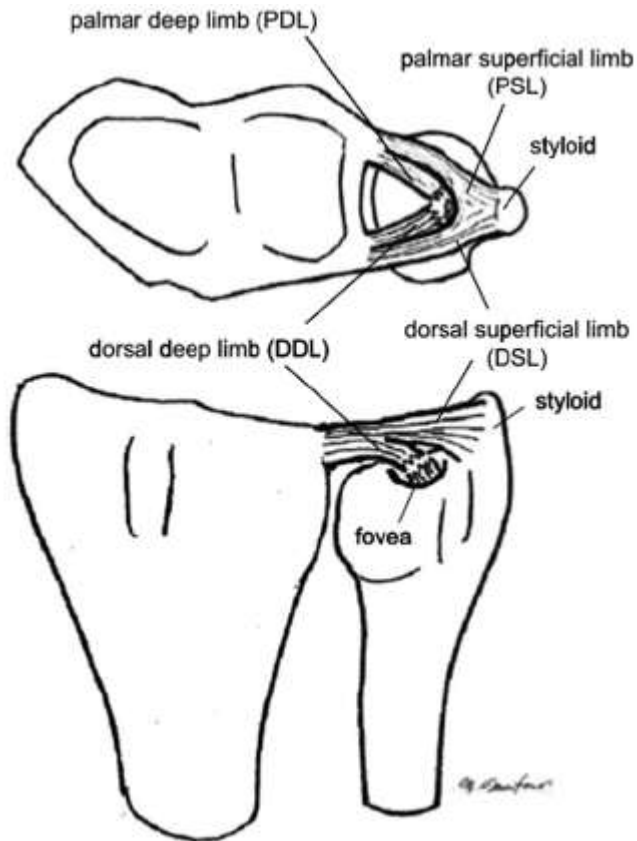
# Anatomy



# Anatomy



# Anatomy



- Foveal insertion most important in DRUJ Stability



